

Newsletter: Week 6

This half-term, we are thinking about the Parable of the Sower

One day, a farmer went out to plant his seed. As he scattered the seed, some fell by the road. The birds came and ate all that seed. Some seed fell on rocky ground, where there wasn't enough dirt. That seed grew very fast, because the ground was not deep. But when the sun rose, the plants dried up because they did not have deep roots. Some other seed fell among thorns. The thorns grew and choked the good plants. Some other seed fell on good ground where it grew and became grain. Some plants made 100 times more grain. Other plants made 60 times more grain, and some made 30 times more grain. - Matthew 13

Update from Mrs Nettleship

Dear Parents,

Another week has flown by at St Mary's and we are now seeing the changes all around us as we move into Autumn. This week the children joined an online assembly with hundreds of other schools and thousands of students across the country to celebrate Black History Month.

The Great Big Live Assembly celebrated the ways that schools up and down the UK are embracing those from a variety of backgrounds into their classrooms and communities. It celebrated black women from history, who continue to inspire us all, and reinforced the importance of respecting others. It invited us all to play our part to make sure everybody feels welcome and valued.

We also had our own smaller celebration when Chestnut class confidently retold the Parable of the Sower for their parents. They did a fantastic job, well done.

Have a lovely weekend,

Mrs Nettleship



Dates/ Information

- 19th October: Parent Tour for new Nursery and September 2024 Reception
- 19th October: Grey Willow Class assembly at 2.30 – parents welcome
- 20th October: Grey Willow Class litter picking at 1.30 – parents welcome.
- 1st November: Parents evening
- 2nd November: Parents Evening
- 2nd November: Bag2School- please return the bags with old clothes. A driver will collect them on this day.



Forest School will resume after half term, so please send the wellies to school next week. They will also be needed during playtime in wet weather.

Notices

- As our Breakfast Club is becoming increasingly popular, to assist with staffing and catering, the sessions you require must be pre-booked on ParentPay. If you need assistance with this, please contact the office
- Year 3 and 4 children can still attend the multi-sports club. Multi-sport Mondays - <https://bookings.thepsdgroup.org.uk/project/48393>; Football Fridays - <https://bookings.thepsdgroup.org.uk/project/48394>
- If you are able to volunteer to support the school, please contact the school office.
- Applications for SMSA and Teaching Assistant roles are available on our website.

Our Vision - 'Good Ground Grows Well'

Through our Christian ethos, we teach children to hear, understand and live the word of God, helping them to give back to the world as global citizens. As every child is uniquely created in God's image, we nurture their individual development through a holistic approach to all aspects of life.

Look at how busy we've been and how we've grown this week!



Ash Class

In Ash class we talked about measure, patterns, compared size, mass and capacity in maths. We also explored simple patterns in groups, by threading cotton reel and buttons. In RE we discussed what Christians believe is precious to God.



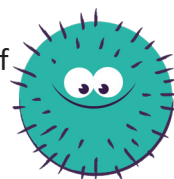
Beech Class

In Beech Class we started our new topic in English- we are comparing non-fiction books with fiction books. In maths, we are learning about less than, more than, and equal to. In RE, we are looking at how humans have impacted God's creation.



Chestnut Class

Chestnut class has been learning about fact families in maths. In English, we looked at how adjectives and prepositions tell us more about nouns. In Science, we tested the effects of exercise on the human body.



Elm Class

This week, Elm class experimented building simple circuits. We also analysed poems' language and structure, discussed poems on 'refuge' as part of National Poetry Day, and celebrated achievements of people from various backgrounds.



Field Maple Class

Field Maple have been looking at different travel guides in English this week and will be researching facts about a city or country in order to write their own travel guide. We have also created a rap/poem regarding one of the food groups in PSHE.



Grey Willow Class

Grey Willow Class had a busy week completing their first SATs practice papers. In geography, we learnt about the impacts of climate change. The brilliant Openbox theatre company presented an interactive workshop about India.



Thought for the week

By faith Abraham obeyed when he was called to go out to the place which he would receive as an inheritance. And he went out, not knowing where he was going. By faith he dwelt in the land of promise as in a foreign country, dwelling in tents with Isaac and Jacob, the heirs with him of the same promise; for he waited for the city which has foundations, whose builder and maker is God. - Hebrews 11: 8-10.



Something to think about

On the face of it, Abraham sounds completely irresponsible. He heads out from the wealth and security of his home in Ur of the Chaldees (that's in modern Iraq) without having a clue where he is going.

This is not a normal thing to do!

If somebody went out on such a mystery tour these days, they would at least have the advantages of their mobile phone and credit cards. But not so for Abraham, for whom this

was a complete journey into the unknown.

The writer to the Hebrews sees this daring journey as clear evidence of Abraham's faith. The only possible explanation for this uncertain journey was his absolute certainty in God.

He knew that God would not let him down and so he was content not only to head off into the unknown but to live in a state of complete vulnerability, in tents, in a foreign country.

His faith was not a whim or a passing emotional experience but a way of life, which he gladly embraced because he knew that God had something much better in store for him.

There is something in all of us that causes us to shrink back from stepping out in faith. We love the security of the familiar, and are often nervous about embarking on something that is new and that might go wrong.

Abraham reminds us that God is so faithful we can confidently step into the unknown.

Attendance at School

All children are expected to achieve 96% attendance.

- *Attendance of 96% is regarded as good by Ofsted.*
- *Attendance below 96% is cause for concern and needs improvement.*
- *Children with attendance below 90% are regarded as persistent absentees and can be referred to the Educational Welfare Officer.*
- *Every day counts!*

Holidays

Requests for holidays or requests for travelling to visit relatives will **NOT be authorised** under any circumstances. Please note this includes requests to visit relatives who are unwell.

Families who take holidays or travel in term time will be issued with a penalty notice.

Every day counts!

If your child's attendance during the school year is:	Your child will have lost:	Or they will have missed:
95%	9 days	50 lessons
90%	19 days	100 lessons
85%	29 days	150 lessons
80%	38 days	200 lessons
75%	48 days	250 lessons

Exceptional or special leave

In exceptional circumstances, parents/carers must make a request to the Headteacher. Please note that it is very unusual for the Headteacher to be able to authorise absence from school.

It is vital that requests are made before making any bookings and documents must be provided to support the application.

In making the decision, the Executive Headteacher will consider the reasons for the absence, your child's current attendance percentage and any previous applications and absences.

Children whose attendance falls below 90% are classified as persistent absence and are regularly referred to Education Welfare service who will then contact parents/ carers.

In serious cases penalty notices (fines) are issued for unauthorised absence. These are currently £120 per person.

Build Skills and Friendships through Sport



with Brunel Bulls Sports Club
Inclusive Sports for
Children and Young People Ages 5-16

Anyone can play!

Regardless of Ability or Disability

We welcome siblings to join too!



Images from joint Charity events
with Evelina & WheelPower

Thursday Evenings

Please see facebook or Kidspace for times

@Brunel Sports Centre

Kingston Lane, Uxbridge, UB8 3PH

Parking is free onsite!

First session free

£5 per session, £3 for sibling

Website | www.brunel.ac.uk/kidspace

Email | westlondonbulls@gmail.com

Facebook | @westlondonbulls



Brunel Bulls is run by a team
of Occupational Therapists,
Physiotherapists, Students
and Qualified Coaches



Brunel
University
London

**PRIMARY SPORTING DEVELOPMENT LTD**

119 Southway . Guildford
Surrey . GU2 8DH

0203 397 7409

info@thepsdgroup.org.uk
www.thepsdgroup.org.uk

Dear Parent/Carer

St Marys CofE Primary School extra-curricular clubs,

The following extra-curricular clubs will begin week commencing 18th September through to week commencing 18th December 2023: - (excluding Half term 23rd – 27th October 2023). **Price reduces accordingly if you book on at a later date.**

Monday	Years 1 - 4	Multi-sports	18 th September – 18 th December (13wks)	3:15pm-4:15pm	£65.00
Friday	Years 3 - 6	Football	22 nd September – 15 th December (12wks)	3:15pm-4:15pm	£60.00

All clubs will now be available to book online through our PSD website on a first come first serve basis.

There will be a maximum of 20 spaces available for each club (minimum 12 for club to take place). Please visit www.thepsdgroup.org.uk to book your child's place.

Clubs are open to boys and girls of all abilities the coaching programme introduces young players to the fundamentals of sport. Coaching sessions aim to improve ability, build confidence, and emphasize the importance of sportsmanship whilst maintaining a realistic perspective of competition.

All coaches are NGB qualified, first aid trained, child-protection educated and hold relevant DBS checks.

Player of the week certificates will be presented at the end of the session.

Please note: Every effort will be made to ensure the club runs outside on the playground. If however, the weather prevents the session going ahead, a classroom theory based session will take place. Please ensure your child wears suitable clothing to keep them warm in the colder months.

Kind regards

The PSD Group

PSD IS COMMITTED TO SAFEGUARDING AND PROMOTING THE WELFARE OF CHILDREN AND YOUNG PEOPLE

PSD is a Limited Company
Registered in the UK. 07775867
Registered VAT Number. 120 4002 93



**PROFESSIONAL
SPECIALISED
DEDICATED**





St Mary's School, Norwood Green: Dates for Autumn Term 2023-2024

Monday 4 th September	INSET day for teachers (school closed to pupils)
Tuesday 5 th September	INSET day for teachers (school closed to pupils)
Wednesday 6 th September	First day of term for Reception to Year 6.
Friday 8 th September	Field Maple Class Police Talk from London Met.
Monday 11 th September	First day of term for Nursery children
Wednesday 13 th September	Grey Willow Class visit St Mary's Church at 9.00 – parents welcome
Thursday 21 st September	Parent Tour for new Nursery and September 2024 Reception intake at 9.30
	Field Maple Class visit St Mary's Church at 9.00 – parents welcome
Friday 22 nd September	School Disco <ul style="list-style-type: none"> • 3PM – 4PM: Reception, Year 1 and Year 2 • 4.30PM – 5.30PM: Year 3 to Year 6
Thursday 28 th September	Nasal Flu vaccine
Saturday 30 th September	St Mary's Open Day
Tuesday 3 rd October	Grey Willow trip to Sky Studios (parent volunteers needed)
Wednesday 4 th October	Chestnut Class visit St Mary's Church at 9.00 – parents welcome
Thursday 5 th October	Parent Tour for new Nursery and September 2024 Reception intake at 9.30
	Phonics workshop for Nursery, Reception and Year 1 parents at 2.30
Friday 6 th October	Elm Class litter picking at 1.30 – parent volunteers welcome
Tuesday 10 th October	Great Big Live Assembly (Black History Month)
	Chestnut Class assembly at 2.30 – parents welcome
Wednesday 11 th October	Beech Class visit St Mary's Church at 9.00 – parents welcome
Thursday 12 th October	Openbox Workshops for Grey Willow and Field Maple Classes
Thursday 19 th October	Parent Tour for new Nursery and September 2024 Reception intake at 9.30
	Grey Willow Class assembly at 2.30 – parents welcome
Friday 20 th October	Field Maple Class litter picking at 1.30 – parent volunteers welcome
Monday 23 rd to Friday 27 th October	Half-term
Wednesday 1 st November	Parents evening
Thursday 2 nd November	Parents evening