

# Newsletter: Week 4

This half-term, we are thinking about the Parable of the Sower

*One day, a farmer went out to plant his seed. As he scattered the seed, some fell by the road. The birds came and ate all that seed. Some seed fell on rocky ground, where there wasn't enough dirt. That seed grew very fast, because the ground was not deep. But when the sun rose, the plants dried up because they did not have deep roots. Some other seed fell among thorns. The thorns grew and choked the good plants. Some other seed fell on good ground where it grew and became grain. Some plants made 100 times more grain. Other plants made 60 times more grain, and some made 30 times more grain. - Matthew 13*

## Update from Mrs Nettleship

Dear Parents,

It was wonderful to see the children's dance moves at the school disco last week!

Everyone had a brilliant time and we raised over £400 for the PTA funds. The next

day, many of our children ran the Ealing Mini Mile and on Sunday

Mrs Vodila ran the Ealing Half Marathon in a very impressive

2 hours 20 minutes. I'm sure you will all join me in saying a huge 'well

done' for this fantastic effort. So far the run has

raised £585 towards new school PE equipment. If

you would like to donate, please use the People's Fundraising QR

code here. Tomorrow, 30th September, we have our school open

day between 1pm and 3pm. Do come along to have a look around,

including in the Forest, and bring your friends.

Today was Mrs Hale's last day before going on

maternity leave. We wish her all the best and can't

wait to meet the new baby!

Enjoy the autumn sunshine and God bless,

Mrs Nettleship



### Notices

- Taster menu: On Thursday 5th October, children will have the option of trying a trio of desserts with ice cream or custard: chocolate brownie; mixed fruit crumble and fruit jelly. Please order on ParentPay as usual for your child (the menu is listed as jelly, but this special Trio of Desserts will be served). If your child would still prefer a packed lunch, but would like to try the dessert, they are welcome to do so on the day. If you do *not* want your child to have this option, please email the office.
- If you are able to volunteer to support the school, either for a one off occasion such as a trip, or on a more regular basis, please contact the school office.
- If your child has outgrown their school uniform but it is still in good condition, please donate it at the school office.
- St Mary's children from Year 3 to 6 will be able to participate in the Young Voices concert at Wembley Stadium on 2nd February. Children will need to attend after-school choir on Mondays and parents will need to buy a ticket to the concert in February. Places will be allocated on a first come, first served basis. To sign up, please contact the school office.

## Dates/ Information

- 30th September: St Mary's School Open Day
- 3rd October: Grey Willow trip to Sky Studios (parent volunteers needed)
- 4th October: Chestnut Class visit St Mary's Church at 9.00 – parents welcome
- 5th October: Trio of Desserts taster menu
- 5th October: Phonics workshop for Reception parents at 2.30
- 5th October: Parent Tour for new Nursery and September 2024 Reception intake at 9.30
- 6th October: Elm Class litter picking at 1.30 – parent volunteers welcome.

phonics

The phonics workshop has been postponed one day and will now take place on:

**Thursday 5th October at 2.30pm.**

This is open to all parents of children in Nursery to Year 1. Please contact the school office to book your place.

### Our Vision - 'Good Ground Grows Well'

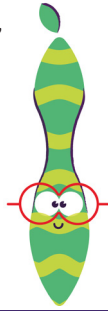
*Through our Christian ethos, we teach children to hear, understand and live the word of God, helping them to give back to the world as global citizens. As every child is uniquely created in God's image, we nurture their individual development through a holistic approach to all aspects of life.*

# Look at how busy we've been and how we've grown this week!



## Ash Class

We learnt to sort using more than one attribute, for example, big and round. In RE we thought about "Who Made The Wonderful World?" The children shared ideas by talking in pairs. Vocabulary used: *wonderful, create, sort, identify, size, shape.*



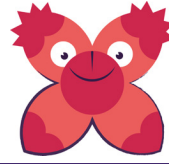
## Elm Class

Elm Class have worked on number sequences in maths, sorted electrical and non-electrical appliances using Venn diagrams and completed an artwork for a competition. In English we did creative writing based on familiar settings.



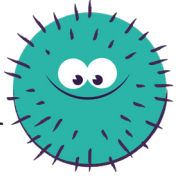
## Beech Class

In Beech Class, we started to read another story in English called *Knuffle Bunny*. We learnt about the Holy Text of Judaism and we made a poster with facts about it. In science, we learnt about the different parts of the body. We had a great week!



## Chestnut Class

Chestnut have retrieved their knowledge about Judaism in a special lesson about Rosh Hashanah and enjoyed eating apples and honey. In Science, we are continuing to learn about the human life cycle and making links to other animals.



## Field Maple Class

Field Maple have enjoyed using the laptops this week to research different miracles in religions and different astronomers in Science. We have also been studying the Just So stories of Rudyard Kipling and written our very own versions.



## Grey Willow Class

Grey Willow have been learning about the holy sacraments in Christianity and analysed carbon footprints and climate change in geography. They studied perfect verb tenses in grammar lessons, and continued working on their landscape projects in art.



## Thought for the week

*In the last days it will be, God declares, that I will pour out my Spirit upon all flesh, and your sons and your daughters shall prophesy, and your young men shall see visions, and your old men shall dream dreams.* - Acts 2:17.

### Something to think about

What do you dream of? What is the vision that guides you?

In Acts the Holy Spirit comes like a 'rush of wind' and 'tongues of fire'. The drama of Pentecost causes a certain amount of confusion, yet the Holy Spirit comes not to confuse or divide, but to unite. Everyone is able to speak and hear one another 'in the native language of each'. Understanding across divisions becomes possible.

Some commentators note that what the Holy Spirit does not do is replace everyone's language with a single common language. That might be a rational way to solve the problems of mistranslation and to cross language barriers but what would be lost would be the particularity of each speaker. In other words, unity does not have to mean sameness in the Pentecost vision. There can be unity in diversity, difference without division.

Peter responds to those sceptical of this miracle not with an explanation but with the poetic prophesy of Joel. Peter - caught up the 'rush of wind' - follows the Spirit's movements and tries to expand the horizons of all those listening still

further. Dream big! Envision the impossible! For God is the author of dreams and visions and prophecies.

Are our dreams today big enough? Do we believe in the possibility that the whole world can come together? Can we envision ways of uniting with one another that celebrate our differences and value each person for who they are?

### Something to do

Write down on a postcard a dream or vision that you would like to see come true in our world. Perhaps you dream of justice being done in a particular context or you have a vision for a movement or change in your community. Ask a friend to post your postcard to you at some future date or put it away in a drawer to come back to in a month or a year. When you come back to it, ask yourself what you have done, by God's grace, to help that vision come alive.

### Something to pray

Holy Spirit, fill me with me with energy and purpose. Move me to dream. Shape my vision that I may act according to God's will. Amen.



# St Mary's Primary School

## Norwood Green

*the little school for big ideas*

# Open Day

## 30th September

### 1pm - 3pm

*"Pupils try hard to embody the school's values of 'love, faith, respect, perseverance and service' in their behaviour and through their positive attitudes to learning." Ofsted Report 2022*



## Is your child starting Nursery or Reception in September 2024?

## Come and visit St Mary's School!

St Mary's Church of England Primary School

26 Tentelow Lane, Norwood Green, Southall, UB2 4LE

Telephone: 020 3693 0510 Email: [office@stmarysschoolng.org](mailto:office@stmarysschoolng.org)

Website: [www.stmarysschoolng.org](http://www.stmarysschoolng.org)



# St Leonard's Church Pet Service



**Sunday 1st October at 3pm**

◀ Come and say thank you for the  
life of your pet and have them  
blessed in church



St Leonard's Church  
Heston Road, Hounslow . TW5 0RD  
[office@parishofhaston.org](mailto:office@parishofhaston.org)  
0208 250 2288  
[www.parishofhaston.org](http://www.parishofhaston.org)



**PRIMARY SPORTING DEVELOPMENT LTD**

119 Southway . Guildford  
Surrey . GU2 8DH

0203 397 7409

info@thepsdgroup.org.uk  
[www.thepsdgroup.org.uk](http://www.thepsdgroup.org.uk)

Dear Parent/Carer

**St Marys CofE Primary School extra-curricular clubs,**

The following extra-curricular clubs will begin week commencing 18<sup>th</sup> September through to week commencing 18<sup>th</sup> December 2023: - (excluding Half term 23<sup>rd</sup> – 27<sup>th</sup> October 2023). **Price reduces accordingly if you book on at a later date.**

|        |             |              |   |               |        |
|--------|-------------|--------------|---|---------------|--------|
| Monday | Years 1 - 4 | Multi-sports | 18 <sup>th</sup> September – 18 <sup>th</sup> December<br>(13wks) | 3:15pm-4:15pm | £65.00 |
| Friday | Years 3 - 6 | Football     | 22 <sup>nd</sup> September – 15 <sup>th</sup> December<br>(12wks) | 3:15pm-4:15pm | £60.00 |

All clubs will now be available to book online through our PSD website on a first come first serve basis.

There will be a maximum of 20 spaces available for each club (minimum 12 for club to take place). Please visit [www.thepsdgroup.org.uk](http://www.thepsdgroup.org.uk) to book your child's place.

Clubs are open to boys and girls of all abilities the coaching programme introduces young players to the fundamentals of sport. Coaching sessions aim to improve ability, build confidence, and emphasize the importance of sportsmanship whilst maintaining a realistic perspective of competition.

All coaches are NGB qualified, first aid trained, child-protection educated and hold relevant DBS checks.

Player of the week certificates will be presented at the end of the session.

Please note: Every effort will be made to ensure the club runs outside on the playground. If however, the weather prevents the session going ahead, a classroom theory based session will take place. Please ensure your child wears suitable clothing to keep them warm in the colder months.

Kind regards

**The PSD Group**

PSD IS COMMITTED TO SAFEGUARDING AND PROMOTING THE WELFARE OF CHILDREN AND YOUNG PEOPLE

PSD is a Limited Company  
Registered in the UK. 07775867  
Registered VAT Number. 120 4002 93



**PROFESSIONAL  
SPECIALISED  
DEDICATED**





# Build Skills and Friendships through Sport



with Brunel Bulls Sports Club  
Inclusive Sports for  
Children and Young People Ages 5-16

Anyone can play!

Regardless of Ability or Disability

We welcome siblings to join too!



TENNIS



Images from joint Charity events  
with Evelina & WheelPower

## Thursday Evenings

Please see facebook or Kidspace for times

## @Brunel Sports Centre

Kingston Lane, Uxbridge, UB8 3PH

Parking is free onsite!

First session free

£5 per session, £3 for sibling

Website | [www.brunel.ac.uk/kidspace](http://www.brunel.ac.uk/kidspace)

Email | [westlondonbulls@gmail.com](mailto:westlondonbulls@gmail.com)

Facebook | [@westlondonbulls](https://www.facebook.com/westlondonbulls)

AND MORE...



CRICKET

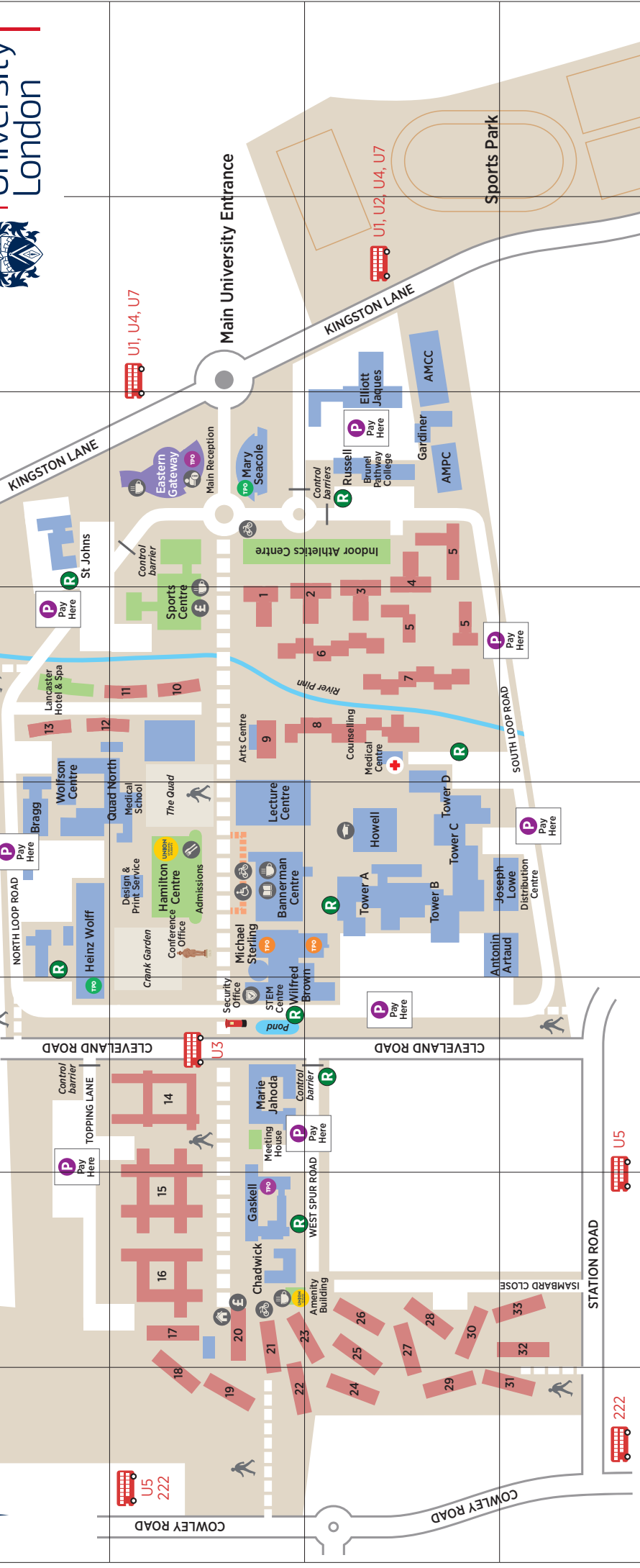


Brunel Bulls is run by a team  
of Occupational Therapists,  
Physiotherapists, Students  
and Qualified Coaches



**Brunel**  
University  
London

A B C D E F G H



### Key

- Main Reception
- Medical Centre
- Security
- Café
- Reserved Parking
- Pay and Display Machine
- Union of Brunel Students
- Library
- Coffee Shop
- Cash Machine
- Accommodation Centre
- Step-free Route
- Student Centre
- Santander Bike Station

### Isambard Complex

|    |                            |
|----|----------------------------|
| 17 | North Hall                 |
| 18 | Meadow Hall                |
| 19 | Michael Bevis Hall         |
| 20 | Concourse Hall (Reception) |
| 21 | Stephen Bragg Hall         |
| 22 | West Hall                  |
| 23 | Maurice Kogan Hall         |
| 24 | David Neave Hall           |
| 25 | Central Hall               |
| 26 | East Hall                  |
| 27 | Runnymede Hall             |
| 28 | George Shipp Hall          |
| 29 | Trevor Slater Hall         |
| 30 | Shoreditch Hall            |
| 31 | Syd Urry Hall              |
| 32 | South Hall                 |
| 33 | Brian Winstanley Hall      |

### Residential

#### Bishop Complex

|   |                         |
|---|-------------------------|
| 1 | Bishop Hall (Reception) |
| 2 | Kilmorey Hall           |
| 3 | Lacy Hall               |
| 4 | St. Margarets Hall      |
| 5 | Faraday Complex         |
| 6 | Clifton Hall            |
| 7 | Chepstow Hall           |
| 8 | Salts Hall              |

#### Lancaster Complex

|    |                   |
|----|-------------------|
| 9  | Gordon Hall       |
| 10 | Stockwell Hall    |
| 11 | Southwark Hall    |
| 12 | Maria Grey Hall   |
| 13 | Borough Road Hall |
| 14 | Mill Hall         |
| 15 | Fleming Hall      |
| 16 | Galbraith Hall    |

### Key

- Main Reception
- Academic Buildings
- Residential Buildings
- Recreational Buildings
- CBASS TPO
- CEDPS TPO
- CHMLS TPO

### Brunel University London

Kingston Lane  
Uxbridge  
UB8 3PH, UK  
Tel 01895 274000

Sat Nav users: Please enter the road address (Kingston Lane) and the postcode (UB8 3PN).



## **St Mary's School, Norwood Green: Dates for Autumn Term 2023-2024**

|  |   |
|--|---|
| Monday 4 <sup>th</sup> September                           | INSET day for teachers (school closed to pupils)  |
| Tuesday 5 <sup>th</sup> September                          | INSET day for teachers (school closed to pupils)  |
| Wednesday 6 <sup>th</sup> September                        | First day of term for Reception to Year 6.  |
| Friday 8 <sup>th</sup> September                           | Field Maple Class Police Talk from London Met.  |
| Monday 11 <sup>th</sup> September                          | First day of term for Nursery children  |
| Wednesday 13 <sup>th</sup> September                       | Grey Willow Class visit St Mary's Church at 9.00 – parents welcome  |
| Thursday 21 <sup>st</sup> September                        | Parent Tour for new Nursery and September 2024 Reception intake at 9.30   |
|  | Field Maple Class visit St Mary's Church at 9.00 – parents welcome  |
| Friday 22 <sup>nd</sup> September                          | School Disco <ul style="list-style-type: none"> <li>• 3PM – 4PM: Reception, Year 1 and Year 2</li> <li>• 4.30PM – 5.30PM: Year 3 to Year 6</li> </ul> |
| Thursday 28 <sup>th</sup> September                        | Nasal Flu vaccine   |
| Saturday 30 <sup>th</sup> September                        | St Mary's Open Day  |
| Tuesday 3 <sup>rd</sup> October                            | Grey Willow trip to Sky Studios (parent volunteers needed)  |
| Wednesday 4 <sup>th</sup> October                          | Chestnut Class visit St Mary's Church at 9.00 – parents welcome   |
| Thursday 5 <sup>th</sup> October                           | Parent Tour for new Nursery and September 2024 Reception intake at 9.30   |
|  | Phonics workshop for Nursery, Reception and Year 1 parents at 2.30  |
| Friday 6 <sup>th</sup> October                             | Elm Class litter picking at 1.30 – parent volunteers welcome  |
| Tuesday 10 <sup>th</sup> October                           | Great Big Live Assembly (Black History Month)   |
|  | Chestnut Class assembly at 2.30 – parents welcome   |
| Wednesday 11 <sup>th</sup> October                         | Beech Class visit St Mary's Church at 9.00 – parents welcome  |
| Thursday 12 <sup>th</sup> October                          | Openbox Workshops for Grey Willow and Field Maple Classes   |
| Thursday 19 <sup>th</sup> October                          | Parent Tour for new Nursery and September 2024 Reception intake at 9.30   |
|  | Grey Willow Class assembly at 2.30 – parents welcome  |
| Friday 20 <sup>th</sup> October                            | Field Maple Class litter picking at 1.30 – parent volunteers welcome  |
| Monday 23 <sup>rd</sup> to Friday 27 <sup>th</sup> October | Half-term   |
| Wednesday 1 <sup>st</sup> November                         | Parents evening   |
| Thursday 2 <sup>nd</sup> November                          | Parents evening   |