

Newsletter: Week 3

This half-term, we are thinking about the Parable of the Sower

One day, a farmer went out to plant his seed. As he scattered the seed, some fell by the road. The birds came and ate all that seed. Some seed fell on rocky ground, where there wasn't enough dirt. That seed grew very fast, because the ground was not deep. But when the sun rose, the plants dried up because they did not have deep roots. Some other seed fell among thorns. The thorns grew and choked the good plants. Some other seed fell on good ground where it grew and became grain. Some plants made 100 times more grain. Other plants made 60 times more grain, and some made 30 times more grain. - Matthew 13

Update from Mrs Nettleship

Dear Parents

We have had another busy week at St Mary's. The Year 6 applications for the roles of Head Girl, Head Boy and School Prefects were of a very high standard and the school leadership team found it very difficult to decide. We would like to thank all of the children who took the time to apply. Congratulations to Sarah and Ethan on being selected for the roles of Head Girl and Head Boy. This year as part of the school introducing School Houses the prefects will be given the roles of House Captains. They will support their house at sports day and other events and competitions during the year. We also held elections for School Council and I am looking forward to working with them throughout the year. One of their first decisions will be naming our new School Houses. Finally, our new R.E. Ambassadors will be supporting in whole school and class worship, in addition to meeting with members of local faith groups and making links with children of different faith backgrounds.

Have a lovely weekend and God bless you all,

Mrs Nettleship



Notices

- There will be a Phonics workshop for Reception parents on 4th October at 2.30pm. Please contact the school office to book your place.
- Year 3 and 4 children can now attend the multi-sports club. Multi-sport Mondays - <https://bookings.thepsdgroup.org.uk/project/48393>; Football Fridays - <https://bookings.thepsdgroup.org.uk/project/48394>
- St Mary's children from Year 3 to 6 will be able to participate in the Young Voices concert at Wembley Stadium on 2nd February. Children will need to attend after-school choir on Mondays and parents will need to buy a ticket to the concert in February. Places will be allocated on a first come, first served basis. To sign up, please contact the school office.

Dates/ Information

- 28th September: Nasal flu spray
- 30th September: St Mary's School Open Day
- 3rd October: Grey Willow trip to Sky Studios (parent volunteers needed)
- 4th October: Chestnut Class visit St Mary's Church at 9.00 – parents welcome
- 4th October: Phonics workshop for Reception parents at 2.30
- 5th October: Parent Tour for new Nursery and September 2024 Reception intake at 9.30
- 6th October: Elm Class litter picking at 1.30 – parent volunteers welcome



Come along to the St Mary's Open Day on 30th September between 1-3pm. Explore the school and the exciting outside area, and have fun on our bouncy castle!

Bring your families and friends!

Our Vision - 'Good Ground Grows Well'

Through our Christian ethos, we teach children to hear, understand and live the word of God, helping them to give back to the world as global citizens. As every child is uniquely created in God's image, we nurture their individual development through a holistic approach to all aspects of life.

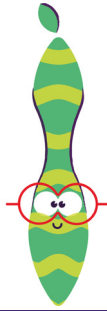
Look at how busy we've been and how we've grown this week!



Ash Class

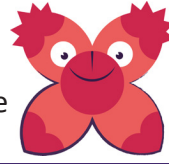
In Ash class this week we started our phonics lessons. For Maths we learnt about matching pictures and objects. We also drew pictures of ourselves using a mirror to describe our features.

Vocabulary used: *self, portrait, same, matching, different and discover.*



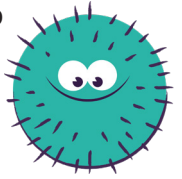
Beech Class

In Beech Class, we have been learning the names of continents and oceans in geography. In maths, we have been learning how to count at different points. In English, we have been reading 'Five Minutes' Peace' and saying who our favourite character is.



Chestnut Class

Chestnut Class have been answering questions about the Fox and the Crane fable, partitioning numbers up to 100 and writing them in their expanded form in maths. We have also been looking at the art of Mondrian and Kasuma.



Elm Class

In RE we discussed the Big Question of 'How did belief in God affect the action of people in the Old Testament?' We also worked on place value and number lines, wrote opinions in FOTM books and discussed our goals in PSHE.



Field Maple Class

Field Maple Class have been looking at numbers to 1,000,000 in maths. We have also enjoyed our science lesson, where we have been looking at the planets in our solar system, and we have created our first narrative for the First of the Month books.



Grey Willow Class

Grey Willow Class have had an exciting week taking on new roles and responsibilities in our school, analysing complex historical texts in English lessons, and furthering our understanding of negative numbers in maths.



Thought for the week

Happy are those who do not follow the advice of the wicked, or take the path that sinners tread, or sit in the seat of scoffers; but their delight is in the law of the Lord, and on his law they meditate day and night. They are like trees planted by streams of water, which yield their fruit in its season, and their leaves do not wither. In all that they do, they prosper.
Psalm 1:1-3

Something to think about

This is a beautiful Psalm to meditate on as we move into this season of 'mists and mellow fruitfulness'. The rich beauty of autumn is starting to be revealed. Across the country, the trees and crops grew and flourished through summer. Now they bear fruit, and we offer our thanks for a safe harvest. For the psalmist, that life-giving water is 'the law of the Lord'. Can we share that delight? Can we drink from that life-giving water? God's law is characterised by righteousness and justice. To follow that law means to be in right relationship with God, with each other, and with our world. When those with power choose the path of selfishness and greed, those living in poverty are the ones to suffer. Streams of water run dry in a literal sense, and trees fail to yield their crops. And yet it need not be that way. Poverty can end when the powerful embrace righteousness and justice, and delight in the law of the Lord.

Something to do

Read Matthew 7:13-20. Do you notice any parallels with Psalm 1? Do you think Jesus may have had this Psalm in mind when he was teaching? With these two passages in mind, can you notice the good and bad 'fruits' of the choices you make?

Something to pray

Lord and giver of life, teach us to delight in your righteous law. Nourish us with your word, so that our lives may bear rich fruit. Give us the confidence and strength to speak out against injustice and to challenge the wickedness and sinful structures that bind so many in poverty. May your kingdom come, Amen.

St Mary's Primary School

Norwood Green

the little school for big ideas

Open Day

30th September

1pm - 3pm

"Pupils try hard to embody the school's values of 'love, faith, respect, perseverance and service' in their behaviour and through their positive attitudes to learning." Ofsted Report 2022



Is your child starting Nursery or Reception in September 2024?

Come and visit St Mary's School!

St Mary's Church of England Primary School

26 Tentelow Lane, Norwood Green, Southall, UB2 4LE

Telephone: 020 3693 0510 Email: office@stmarysschoolng.org

Website: www.stmarysschoolng.org



**Children from St Mary's are running the
Family Mile and Rob Willin Memorial Mile
in Lammas Park**



**The run is taking place
on 23rd September from 11am.**



**Please encourage friends and family
members to show their support on the
day and with a generous donation! Funds
raised will go towards new outdoor and
P.E. equipment.**



**You can make donations at
[https://www.peoplesfundraising.com/
fundraising/st-mary-s-fun-run](https://www.peoplesfundraising.com/fundraising/st-mary-s-fun-run)
or by using the QR code:**

**There is more information at
[https://race-nation.co.uk/register/ealing-
half-marathon/ealing-mini-mile-2023](https://race-nation.co.uk/register/ealing-half-marathon/ealing-mini-mile-2023)**





St Leonard's Church Pet Service



Sunday 1st October at 3pm

Come and say thank you for the
life of your pet and have them
blessed in church



St Leonard's Church
Heston Road, Hounslow . TW5 0RD
office@parishofheston.org
0208 250 2288
www.parishofheston.org



**PRIMARY SPORTING DEVELOPMENT LTD**

119 Southway . Guildford
Surrey . GU2 8DH

0203 397 7409

info@thepsdgroup.org.uk
www.thepsdgroup.org.uk

Dear Parent/Carer

St Marys CofE Primary School extra-curricular clubs,

The following extra-curricular clubs will begin week commencing 18th September through to week commencing 18th December 2023: - (excluding Half term 23rd – 27th October 2023). **Price reduces accordingly if you book on at a later date.**

Monday	Years 1 - 4	Multi-sports	18 th September – 18 th December (13wks)	3:15pm-4:15pm	£65.00
Friday	Years 3 - 6	Football	22 nd September – 15 th December (12wks)	3:15pm-4:15pm	£60.00

All clubs will now be available to book online through our PSD website on a first come first serve basis.

There will be a maximum of 20 spaces available for each club (minimum 12 for club to take place). Please visit www.thepsdgroup.org.uk to book your child's place.

Clubs are open to boys and girls of all abilities the coaching programme introduces young players to the fundamentals of sport. Coaching sessions aim to improve ability, build confidence, and emphasize the importance of sportsmanship whilst maintaining a realistic perspective of competition.

All coaches are NGB qualified, first aid trained, child-protection educated and hold relevant DBS checks.

Player of the week certificates will be presented at the end of the session.

Please note: Every effort will be made to ensure the club runs outside on the playground. If however, the weather prevents the session going ahead, a classroom theory based session will take place. Please ensure your child wears suitable clothing to keep them warm in the colder months.

Kind regards

The PSD Group

PSD IS COMMITTED TO SAFEGUARDING AND PROMOTING THE WELFARE OF CHILDREN AND YOUNG PEOPLE

PSD is a Limited Company
Registered in the UK. 07775867
Registered VAT Number. 120 4002 93



**PROFESSIONAL
SPECIALISED
DEDICATED**

