

# Newsletter: Week 2

This half-term, we are thinking about the Parable of the Sower

*One day, a farmer went out to plant his seed. As he scattered the seed, some fell by the road. The birds came and ate all that seed. Some seed fell on rocky ground, where there wasn't enough dirt. That seed grew very fast, because the ground was not deep. But when the sun rose, the plants dried up because they did not have deep roots. Some other seed fell among thorns. The thorns grew and choked the good plants. Some other seed fell on good ground where it grew and became grain. Some plants made 100 times more grain. Other plants made 60 times more grain, and some made 30 times more grain. - Matthew 13*

## Update from Mrs Nettleship

I can't believe it is a whole year since I joined our family at St Mary's. This year I am enjoying being here fulltime as Head of School and SENCO and getting the chance to spend time with our wonderful children every day. The children have had another fantastic week settling into their new routines and classes and it is so encouraging seeing their bright smiles and enthusiasm around the school. This week we have extended our St Mary's family even further by welcoming in our new nursery children, and we are thrilled to have them join our school. The children have also been enjoying lessons with our two new members of staff. Miss. Alonso, our new Spanish teacher, brings a wealth of experience and passion for language learning that I know will inspire our students. Likewise, Mr. Partridge, our new PE teacher, has already ignited great enthusiasm for physical activity among our children.



I hope you all enjoy this late summer sun and wish you all a good weekend.

Mrs Nettleship

### Notices

- Sports clubs are beginning next week. There are a few spaces left for Year 1&2 Multi-Sports on Mondays and Year 3 - 6 football on Fridays, both 3.15 - 4.15pm. Please read the information at the end of the newsletter to sign up. Ukulele club will be on Friday lunchtimes for 30 minutes. If you would like to sign up, please arrange payment on ParentPay.
- We are having an Open Day on 30th September. This is an opportunity for our current families and potential new families to have a look around the school. If you know children who will be ready for Nursery or Reception in the next year, bring them with you!
- Please help your children fundraise for the Ealing Family Mile and Memorial Mile taking place on 23rd September, as well as sponsoring our lovely Mrs Vodila who is running the Ealing Half-Marathon! There is more information at the end of the newsletter.

## Dates/ Information

- 21st September: Year 5 service at St Mary's church at 9.00 (parents welcome)
- 21st September: Parent tour for Reception 2024
- 22nd September: School Disco (tickets available now)
- 28th September: Nasal flu spray
- 30th September: St Mary's School Open Day
- 3rd October : Grey Willow trip to Sky Studios (parent volunteers needed)

There are further dates available at the end of the newsletter.



### 22nd September

There are still tickets available for the school disco.

Reception, Y1 & Y2 at 3pm

Years 3 - 6 at 4.30pm.

Tickets: £5

There is more information on Class Dojo

### Our Vision - 'Good Ground Grows Well'

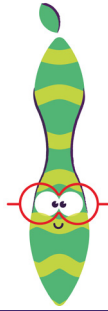
*Through our Christian ethos, we teach children to hear, understand and live the word of God, helping them to give back to the world as global citizens. As every child is uniquely created in God's image, we nurture their individual development through a holistic approach to all aspects of life.*

# Look at how busy we've been and how we've grown this week!



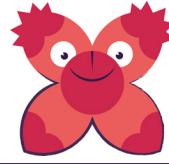
## Ash Class

This week we introduced our focus book "Owl Babies" to support the PSHE circle time discussion of parents always returning. We also went for a nature walk in the wood and collected leaves and twigs to create lovely pictures of owls.



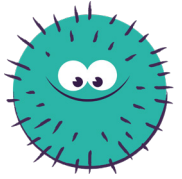
## Beech Class

In Beech class, we have started learning about the creation story in RE. In Maths, we are learning how to sort objects in to groups and how to count up to 10. In English, we are reading Five Minutes Peace and trying to recap the story in our own words.



## Chestnut Class

Chestnut have recognised tens and ones in a place value chart and practised writing numbers to 100 in words. In English, we have written dialogue between two characters from a fable. We have also begun to learn about offspring and their adults in science.



## Elm Class

In maths, Elm class have been working on part-whole models in numbers and place value. We discussed what we already know about electricity for the start of our new science topic. In art we studied "The Tree of Life" and in PE we learnt about Tag Rugby skills.



## Field Maple Class

This week Field Maple have really enjoyed looking at Earth and Space in Science where we learnt about different theories and the scientific arguments around the topic. We have also enjoyed starting to learn about volcanoes in geography.



## Grey Willow Class

Year 6 children have enjoyed a Spanish lesson with their new teacher, practiced skills in PE and learnt about the style of historical novels in English. We have solved place value problems in maths and reflected on the journey between life and death in RE.



## Thought for the week

☪ So do not worry about tomorrow, for tomorrow will bring worries of its own. Today's trouble is enough for today. ☪  
- Matthew 6:34.

### Something to think about

There are so many worries for tomorrow – what will happen as we get older, as the world changes and as seasons shift. Today has enough trouble, Jesus challenges us! He asks us to live in what is today rather than in what may not be tomorrow. This is really a call to action. It is a call to get stuck into today – the opportunities to bring about His Kingdom here on Earth here and now. In worrying about tomorrow, we can also so often miss out on the blessing of today. What is it that God has done for you today? Is there food on your table? Give thanks. Do you have clothes to wear? Give thanks. Do you have clean water to drink? Give thanks. A kingdom life should not be characterised by worry, but by a deep trust that God is sufficient. Let's start living in the present.

### Something to do

Choose to live in today. Make a conscious effort to listen more deeply, to give thanks more readily and to serve more fervently.

### Something to pray

I am sorry, Lord, when I fail to live in today. I am sorry when I fret and worry about tomorrow. Help me focus on the opportunities of today and give you the tomorrows of my life. Lead me by your spirit!



# St Mary's Primary School

## Norwood Green

*the little school for big ideas*

# Open Day

## 30th September

### 1pm - 3pm

*"Pupils try hard to embody the school's values of 'love, faith, respect, perseverance and service' in their behaviour and through their positive attitudes to learning." Ofsted Report 2022*



## Is your child starting Nursery or Reception in September 2024?

## Come and visit St Mary's School!



St Mary's Church of England Primary School  
26 Tentelow Lane, Norwood Green, Southall, UB2 4LE  
Telephone: 020 3693 0510 Email: [office@stmarysschoolng.org](mailto:office@stmarysschoolng.org)  
Website: [www.stmarysschoolng.org](http://www.stmarysschoolng.org)



**Children from St Mary's are running the  
Family Mile and Rob Willin Memorial Mile  
in Lammas Park**



**The run is taking place  
on 23rd September from 11am.**



**Please encourage friends and family  
members to show their support on the  
day and with a generous donation! Funds  
raised will go towards new outdoor and  
P.E. equipment.**

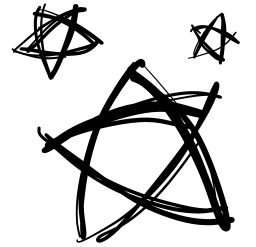
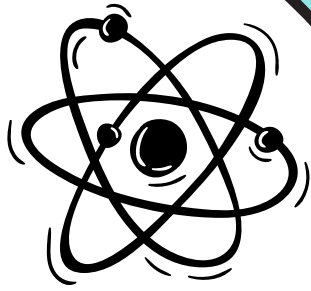


**You can make donations at  
[https://www.peoplesfundraising.com/  
fundraising/st-mary-s-fun-run](https://www.peoplesfundraising.com/fundraising/st-mary-s-fun-run)  
or by using the QR code:**

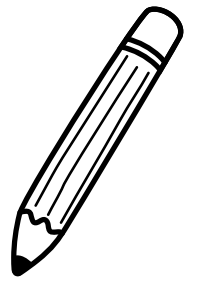
**There is more information at  
[https://race-nation.co.uk/register/ealing-  
half-marathon/ealing-mini-mile-2023](https://race-nation.co.uk/register/ealing-half-marathon/ealing-mini-mile-2023)**







# BACK 2 SCHOOL



DISCO

FRIDAY 22ND SEPTEMBER  
£5 a ticket



Reception & ks1 3:15-  
4:15  
ks2 4:30- 5.30



# St Leonard's Church Pet Service



## Sunday 1st October at 3pm

Come and say thank you for the  
life of your pet and have them  
blessed in church



St Leonard's Church  
Heston Road, Hounslow . TW5 0RD  
[office@parishofheton.org](mailto:office@parishofheton.org)  
0208 250 2288  
[www.parishofheton.org](http://www.parishofheton.org)



**PRIMARY SPORTING DEVELOPMENT LTD**

119 Southway . Guildford  
Surrey . GU2 8DH

0203 397 7409

info@thepsdgroup.org.uk  
www.thepsdgroup.org.uk

Dear Parent/Carer

**St Marys CofE Primary School extra-curricular clubs,**

The following extra-curricular clubs will begin week commencing 18<sup>th</sup> September through to week commencing 18<sup>th</sup> December 2023: - (excluding Half term 23<sup>rd</sup> – 27<sup>th</sup> October 2023)

Monday	Years 1 & 2	Multi-sports	18 <sup>th</sup> September – 18 <sup>th</sup> December (13wks)	3:15pm-4:15pm	£65.00
Friday	Years 3-6	Football	22 <sup>nd</sup> September – 15 <sup>th</sup> December (12wks)	3:15pm-4:15pm	£60.00

All clubs will now be available to book online through our PSD website on a first come first serve basis.

There will be a maximum of 20 spaces available for each club (minimum 12 for club to take place). Please visit [www.thepsdgroup.org.uk](http://www.thepsdgroup.org.uk) to book your child's place.

Clubs are open to boys and girls of all abilities the coaching programme introduces young players to the fundamentals of sport. Coaching sessions aim to improve ability, build confidence, and emphasize the importance of sportsmanship whilst maintaining a realistic perspective of competition.

All coaches are NGB qualified, first aid trained, child-protection educated and hold relevant DBS checks.

Player of the week certificates will be presented at the end of the session.

Please note: Every effort will be made to ensure the club runs outside on the playground. If however, the weather prevents the session going ahead, a classroom theory based session will take place. Please ensure your child wears suitable clothing to keep them warm in the colder months.

Kind regards

**The PSD Group**

PSD IS COMMITTED TO SAFEGUARDING AND PROMOTING THE WELFARE OF CHILDREN AND YOUNG PEOPLE

PSD is a Limited Company  
Registered in the UK. 07775867  
Registered VAT Number. 120 4002 93



**PROFESSIONAL  
SPECIALISED  
DEDICATED**





## **St Mary's School, Norwood Green: Dates for Autumn Term 2023-2024**

Monday 4 <sup>th</sup> September	INSET day for teachers (school closed to pupils)
Tuesday 5 <sup>th</sup> September	INSET day for teachers (school closed to pupils)
Wednesday 6 <sup>th</sup> September	First day of term for Reception to Year 6.
Friday 8 <sup>th</sup> September	Field Maple Class Police Talk from London Met.
Monday 11 <sup>th</sup> September	First day of term for Nursery children
Wednesday 13 <sup>th</sup> September	Grey Willow Class visit St Mary's Church at 9.00 – parents welcome
Thursday 21 <sup>st</sup> September	Parent Tour for new Nursery and September 2024 Reception intake at 9.30
	Field Maple Class visit St Mary's Church at 9.00 – parents welcome
Friday 22 <sup>nd</sup> September	School Disco <ul style="list-style-type: none"> <li>• 3PM – 4PM: Reception, Year 1 and Year 2</li> <li>• 4.30PM – 5.30PM: Year 3 to Year 6</li> </ul>
Wednesday 27 <sup>th</sup> September	Elm Class visit St Mary's Church at 9.00 – parents welcome
Thursday 28 <sup>th</sup> September	Nasal Flu vaccine
Saturday 30 <sup>th</sup> September	St Mary's Open Day
Tuesday 3 <sup>rd</sup> October	Grey Willow trip to Sky Studios (parent volunteers needed)
Wednesday 4 <sup>th</sup> October	Chestnut Class visit St Mary's Church at 9.00 – parents welcome
Thursday 5 <sup>th</sup> October	Parent Tour for new Nursery and September 2024 Reception intake at 9.30
Friday 6 <sup>th</sup> October	Litter Picking with Elm Class at 1.30 – parent volunteers welcome
Wednesday 11 <sup>th</sup> October	Beech Class visit St Mary's Church at 9.00 – parents welcome
Thursday 12 <sup>th</sup> October	Openbox Workshops for Grey Willow and Field Maple Classes
Thursday 19 <sup>th</sup> October	Parent Tour for new Nursery and September 2024 Reception intake at 9.30
	Grey Willow Class Assembly at 2.30pm – parents welcome
Friday 20 <sup>th</sup> October	Litter Picking with Grey Willow Class at 1.30 – parent volunteers welcome
Monday 23 <sup>rd</sup> to Friday 27 <sup>th</sup> October	Half-term
Wednesday 1 <sup>st</sup> November	Parents evening
Thursday 2 <sup>nd</sup> November	Parents evening