

Newsletter: Week 10

The value we are thinking about this half-term is: LOVE

'If I speak in the tongues of men or of angels, but do not have love, I am only a resounding gong or a clanging cymbal. If I have the gift of prophecy and can fathom all mysteries and all knowledge, and if I have a faith that can move mountains, but do not have love, I am nothing. If I give all I possess to the poor and give over my body to hardship that I may boast, but do not have love, I gain nothing.

Love is patient, love is kind. It does not envy, it does not boast, it is not proud. It does not dishonor others, it is not evil but rejoices with the truth. It always protects, always trusts, always hopes, always perseveres.'

Corinthians 13

Update from Mrs Nettleship

Dear Parents,

We have had another busy week at school. Years 3-6 had their final session with Forest School, so next week it is the turn of Reception and Years 1&2 – don't forget your wellies and waterproofs. We also had a visit from Openbox Theatre, the children had a wonderful time and learnt so much about their current topics. The Openbox staff said that the children had brilliant ideas, and that the behaviour was fantastic. If you have not paid for this workshop, you are still able to on ParentPay, as we can only continue with events like these when the cost is covered. Many of the Year 5 have spent the week developing their riding skills as part of the Bikeability course. The staff said how good their behaviour was and were able to take them out on the road for much of the week.

God bless,

Mrs Nettleship



Notices:

- If you know a family who is interested in Nursery or school places, please encourage them to book a tour. Just contact the school office.
- If you need a DBS check to help in school or volunteer on trips please contact office@stmarysschoolng.org
- For the safety of all children and staff, parking within the school site is not permitted during drop off and collection. This includes Breakfast Club drop off and After School Club collection. Thank you for your co-operation with this.

Dates/ Information

- 22nd November: Field Maple Class visit St Mary's Church at 9.00am-parents welcome
- 23rd November: Grey Willow Class at Khalsa for Guru Nanak's birthday
- 23rd November: Parent Tour for new Nursery and Reception intake at 9.30am
- 29th November: Elm Class visit St Mary's Church at 9.00am-parents welcome
- 30th November: School Photographs
- 1st December: Grey Willow Class litter picking at 1.30pm
- 4th December: Parent Tour for new Nursery and Reception intake at 7.00pm

Attendance Champions

Sapling Class	87.18%
Ash Class	94.49%
Beech Class	93.92%
Chestnut Class	92.92%
Elm Class	91.14%
Field Maple Class	92.14%
Grey Willow Class	96.44%

Our Vision - 'Good Ground Grows Well'

Through our Christian ethos, we teach children to hear, understand and live the word of God, helping them to give back to the world as global citizens. As every child is uniquely created in God's image, we nurture their individual development through a holistic approach to all aspects of life.

Look at how busy we've been and how we've

Ash Class

This week in Ash Class we explored fact files in literacy. We learnt about Oliver Jeffers, and all the books he wrote. We also discussed the meanings of the title and blurb of a book. Vocabulary used: author, illustrator, title and blurb.



Beech Class

In English, we have started to plan our funny poem. In maths, we have started to look at addition word problems. In history, we have learnt why people wear poppies in November and what happened during WW1. In science, we looked at all the different animal groups.



Chestnut Class

Chestnut Class finished the addition and subtraction topic in maths by solving missing number problems. In English, we have been writing our recipes for pizzas with our chosen toppings. The Great Fire of London came alive through our interactive workshop!



Elm Class

Elm class practised times table using TTRS, learnt about connectives and used them in sentences. We celebrated Roman day by investigating key events, attending a Roman workshop and creating Roman artwork. We also created ideas for Super Pet story writing.



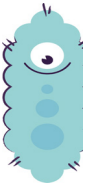
Field Maple Class

This week the children have become illustrators, as they have drawn their new character into their English books. The children have also enjoyed their bikeability lessons throughout the week and enjoyed learning new skills while riding a bike.



Grey Willow Class

This week Grey Willow Class practised fractions in maths, and started a fiction unit in English. We reflected on what is important when we prepare for Christmas in RE and discussed how different adverts can convey the real spirit of Christmas.



Thought for the week

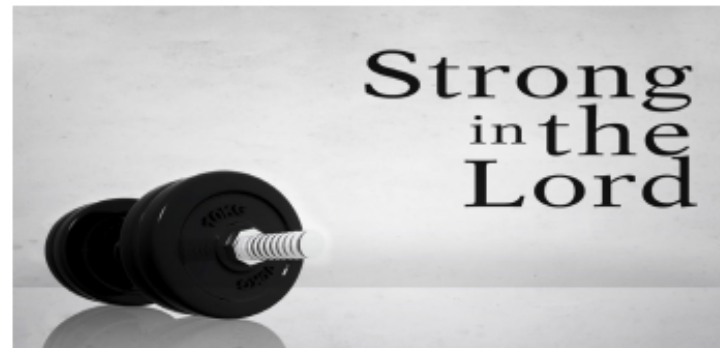
*He raises up the poor from the dust; he lifts the needy from the ash heap, to make them sit with princes and inherit a seat of honour.
- 1 Samuel 2:8*

Something to think about

The history of humanity assures us that the top dog doesn't stay there for ever. All empires fall in the end. Even personal wealth can disappear.

Relying on God rather than our own strength sets us free to use what the Lord has entrusted to us to bless others. It is when you give of yourself that you truly give, for as Kahlil Gibran says: 'What are your possessions but things you keep and guard for fear you may need them tomorrow?'

This passage takes us into the prophet Zechariah 4:6 - 'Not by might, nor by power, but by my Spirit says the Lord.'



Something to do

As you prepare for Christmas, explore what gifts you could give that would have real meaning.

Something to pray

Father, in a world which is so uncertain for so many, I thank you for your provision and the security I have in Jesus. Please grant me opportunities this day to be a blessing to another person.



St Mary's School, Norwood Green: Dates for Autumn Term 2023-2024

Wednesday 22 nd November	Field Maple Class visit St Mary's Church at 9.00am – parents welcome
Thursday 23 rd November	Parent Tour for new Nursery and September 2024 Reception intake at 9.30am
Thursday 23 rd November	Field Maple Assembly 2.30pm – parents welcome
Thursday 23 rd November	Grey Willow at Khalsa School for Guru Nanak's Birthday at 9.00am
Wednesday 29 th November	Elm Class visit St Mary's Church at 9.00am – parents welcome
Thursday 30 th November	School Photographs
Friday 1 st December	Grey Willow Class Litter Picking-1.30pm
Wednesday 6 th December	Chestnut Class visit St Mary's Church at 9.00am – parents welcome
Thursday 7 th December	Parent Tour for new Nursery and September 2024 Reception intake at 9.30am
Thursday 7 th December	Field Maple Class trip to the Science Museum
Monday 11 th December	Pantomime
Wednesday 13 th December	Beech Class visit St Mary's Church at 9.00am – parents welcome
Wednesday 13 th December	Height & Weight for Reception and Grey Willow- 9.00am
Wednesday 13 th December	St Mary's Christmas Fair
Friday 15 th December	Reception and Nursery Nativity
Tuesday 19 th December	Beech and Chestnut Class Nativity 9.00am
Tuesday 19 th December	Christmas lunch
Wednesday 20 th December	End of Term-finish at 1.15pm.

Spring Term

Monday 8 th January	Term Starts
Friday 12 th January	Field Maple Class Police talks
Friday 2 nd February	Young Voices-St Mary's Choir
Thursday 8 th February	Elm Class Assembly 2.30pm – parents welcome
Friday 9 th February	End of Term-finish at 3.00pm
Monday 12 th February	Half Term

ST MARY'S SCHOOL

FREE ENTRY

Christmas Fair

This year the fair will be during school hours and each class will be taken. Please ensure your child has some pocket money to spend at the fair. We hope this will encourage independence and how to manage money. The money raised will go towards some much needed toilets outside for the children.

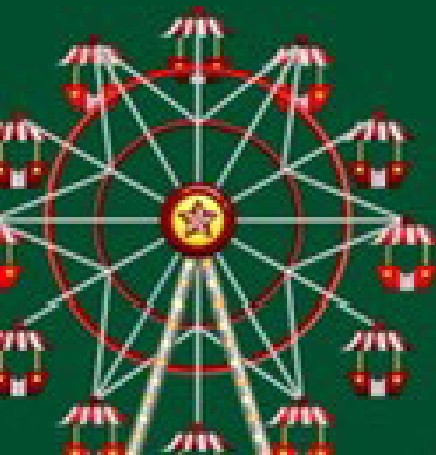
WED



School day event

13
DEC

GAMES, FOOD AND DRINKS,
GIFTING CRAFTS, GINGER BREAD
DECORATING AND LOTS MORE.





Christingle

St Leonard's Church Heston

Sunday 10th December 3pm

Why not kick start your Christmas preparations by joining us for our child focussed, heart-warming service, echoing the promise of light, hope, joy and peace for our families, our community and around the world.

All Welcome




www.parishofheston.org
Heston Road, Hounslow TW5 0RD
Tel 020 8570 2288
Email office@parishofheston.org
Charity number: 1159915

Saturday 9th December 1pm-6pm



The Plough Christmas Market

**Craft Stalls, Santa's Grotto, Live Music,
Carol Singers, Mulled Wine,
Great food & Beer**



WEDNESDAY 29TH NOVEMBER

7:30PM



Charles Dickens's

OPEN BAR PRESENTS
A CHRISTMAS CAROL

TICKETS £15 - £18

Book now at:

<https://ploughnorwoodgreen.com/>
or contact as

020 8574 7473

info@ploughnorwoodgreen.com

The Plough Norwoodgreen, Tentelow Lane, Southall UB2 4LG



Gentleman's Bake Off

Saturday 16th December
categories: sweet, savoury & puddings

Bring your entries to The Plough by 2pm
for judging at 2:30pm