

Newsletter: Week 5

Our Vision - ‘Good Ground Grows Well’

Through our Christian ethos, we teach children to hear, understand and live the word of God, helping them to give back to the world as global citizens. As every child is uniquely created in God’s image, we nurture their individual development through a holistic approach to all aspects of life’.



Update from Mrs Nettleship

This week has been Children’s Mental Health Week and in PSHE the children have completed various activities around this theme.

On Thursday we all enjoyed watching Elm class lead the assembly and share with us a celebration of their work. World book day will be on Thursday 7th March. With this in mind, the PTA have asked for any second-hand dress up costumes to be donated to the school and we will then have a sale of these costumes after school on Wed 28th February. Hopefully we will be able to save you all some money from buying new costumes and raise some money for the school at the same time. After half term, we will be starting our own after school club – Super Stars Wrap-around Care - please see the attached flyer for the fun activities we will be running.

I hope you all have a lovely half term break and we look forward to seeing you all back at school on 19th February.

God Bless,
Mrs Nettleship



Message from our Executive Headteacher Mrs Blake

As we approach half term, I want to extend my heartfelt gratitude to all pupils, staff, Governors, Trustees and families for their dedication and hard work. We have had a great start to the year and I am excited for the term ahead. I look forward to seeing you all at the upcoming events at school.

God Bless,
Mrs Blake

Dates/ Information

- **19th February:** School begins
- **19th February:** Choir restarts for Year 2-6 please pay on SchoolMoney
- **20th February:** Chestnut Class trip to Synagogue-parent volunteers welcome
- **20th February:** Elm Class trip to Shree Ram Mandir-parent volunteers welcome
- **20th February:** Forest School for Beech and Grey Willow Class
- **21st February:** Elm Class Swimming at 10am-parent volunteers welcome

Attendance Champions	
Sapling Class	88.00%
Ash Class	89.63%
Beech Class	96.83%
Chestnut Class	94.44%
Elm Class	94.12%
Field Maple Class	93.65%
Grey Willow Class	88.53%

Our Vision - ‘Good Ground Grows Well’

Through our Christian ethos, we teach children to hear, understand and live the word of God, helping them to give back to the world as global citizens. As every child is uniquely created in God’s image, we nurture their individual development through a holistic approach to all aspects of life.

Sapling Class

Sapling Class this week have been reading 'The Enormous Turnip'. We have been learning new words for 'big' such as enormous, huge and gigantic. We also learnt about Chinese New Year, and made dragons and lanterns.



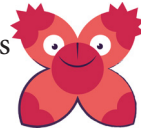
Ash Class

For Children's Mental Health Week, Ash Class tried something new. The children were introduced to a new brain break video filled with instructions for them to follow. In a group we later discussed our feelings when attempting to learn a new skill.



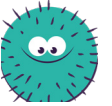
Beech Class

In Beech Class we continued to write our own sentences about Pinocchio. In maths we looked at double numbers. In PSHE we looked at how it is okay to make mistakes. We also learnt how to count in Japanese and how teddy bears have changed over time.



Chestnut Class

Chestnut Class have been practising the 2 times-tables and dividing by 2 in maths. In phonics, we learnt different ways to spell the /or/ sound. In art, we made 3D relief maps using a variety of everyday materials. In English, we have written our own adventure story.



Look at how busy we've been and how we've grown this week!

Elm Class

Elm Class planned and wrote a story based on a known text, and solved data handling and statistics problems in maths. We also delivered assembly performances to parents, and investigated where food is sourced in school.



Field Maple Class

This week we have visited Mars virtually using a WebVR in English. We used this to create some fantastic sentences describing the surface of Mars. We have also created a design for a Maya city in history.



Grey Willow Class

Grey Willow Class had a very busy week learning about classifying invertebrates in science, using clay to model some of them. We also looked at problem solving in algebra, and practised paranthesis and plurals/possessives in English grammar.



Thought for the week

For you, O God, have tested us; you have tried us as silver is tried.
- Psalm 66:10.

Something to think about

Have there been times in your life when you have felt like you are being tested? Would you tell someone else that you think God is testing them?

Sometimes the language of testing is used to explain away or even justify suffering. It can be an idea we reach for when someone we know looks to us for the reason behind a difficult experience. Like Job's comforters we can be tempted to take a "God's-eye-view" of events and imagine that we can know exactly why something is happening.

This becomes dangerous when those in power use the language of testing to describe the suffering of the powerless.

It also overlooks the other important part of this scriptural imagery. This verse is not just about testing but about the testing and refining of something deeply precious. When we go through testing times what can we do to remind ourselves of our value? What can we do to remind others that they are precious to God, this day and always?

Something to do

Do you know someone who is going through a testing time? Plan a small step to show them how valuable they are to you and to God.

Something to pray

Watch, O Lord, with those who wake, or watch, or weep tonight,
and give Your angels and saints charge over those who sleep.

Tend Your sick ones, O Lord Christ.

Rest Your weary ones.

Bless Your dying ones.

Soothe Your suffering ones.

Pity Your afflicted ones.

Shield Your joyous ones, and all for Your love's sake.

Amen.



26 Tentelow Lane
Norwood Green
Southall
UB2 4LE

office@stmarysschoolng.org

020 3693 0510

January 18th 2024

Dear Parents/Carers,

Re: Punctuality

Despite letters going home last week to those families who are persistently late, we still have an extremely high number of children arriving to school after the registers have been taken.

Due to this, we have no option but to change the way we receive children who are late to school.

The new procedure is as follows and will start after the February half term:

- Please escort your child to the gate where you will be buzzed through.
- Please come to the school office WITH YOUR CHILD and complete the form/sign your child in.
- Your child will then be taken/sent to class.

Please note that we cannot accept late children without an adult to sign them in, so please do not just drop them and go, please bring them to the school office.

This now applies to all children who are late to school, regardless of the reason. If you have notified us of a medical appointment, this will be recorded accordingly but you are still required to escort them to the school office.

Those families who are persistently late have already received a letter, but please find the letter attached again to ensure that everyone is aware of the new procedures and the Borough's requirement for us to report persistent lateness.

As always, children can be dropped off from 8.30am at the gates, and should be in class ready for the register by 8.50am. The gates are closed promptly at 8.50am.

Thank you to all those families who do get their children to school on time, your efforts and support do not go un-noticed and are very much appreciated.

Yours sincerely

Mrs C Stangroom

Pastoral Manager

All children are expected to achieve 96% attendance.

- *Attendance of 96% is regarded as good by Ofsted.*
- *Attendance below 96% is cause for concern and needs improvement.*
- *Children with attendance below 90% are regarded as persistent absentees and can be referred to the Educational Welfare Officer.*
- *Every day counts!*

Every day counts!

Holidays

Requests for holidays or requests for travelling to visit relatives will **NOT be authorised** under any circumstances. Please note this includes requests to visit relatives who are unwell.

Families who take holidays or travel in term time will be issued with a penalty notice.

If your child's attendance during the school year is:	Your child will have lost:	Or they will have missed:
95%	9 days	50 lessons
90%	19 days	100 lessons
85%	29 days	150 lessons
80%	38 days	200 lessons
75%	48 days	250 lessons

Exceptional or special leave

In exceptional circumstances, parents/carers must make a request to the Headteacher. Please note that it is very unusual for the Headteacher to be able to authorise absence from school.

It is vital that requests are made before making any bookings and documents must be provided to support the application.

In making the decision, the Executive Headteacher will consider the reasons for the absence, your child's current attendance percentage and any previous applications and absences.





We are delighted to launch 'St. Mary's After School Club' after Half Term. Mrs Hunter will be leading our club and she is working with the School Council to come up with a new name!

Sessions are

- 3-5pm £8.00
- 3-6pm £12.00
- Half days at School and Training Days will now also be available at an additional cost

Every session will include a small snack, consisting of toast and fruit. Quiet time and playground activities every session. We will also be offering clubs each session which is included in the price!

Monday	Cooking
Tuesday	Homework Club
Wednesday	Arts and Crafts
Thursday	Dance Club
Friday	Film night or Karaoke with Hot Dogs and popcorn!

Charges will now apply for late collection to all parents. If you are late collecting your child (after 3pm) your child will go into ASC and you will be charged £8.00 for the session which will need to be paid on arrival.

If you are interested please contact the school office office@stmarysschoolng.org to secure your space!

Mrs R Blake
Executive Headteacher
Bishop Winnington Ingram, St. Mary's and Holy Trinity
Church of England Primary Schools



St Mary's PTA



Second Hand World Book Day Costume Sale



Wednesday
28th February
3pm

Please bring any
donated costumes
to the School
office by
Friday
23rd February



WORLD
**BOOK
DAY**
7 MARCH 2024



Save the date!
World Book Day
7 March 2024



SPONSORED BY
**NATIONAL
BOOK
tokens**



ILLUSTRATED BY VIVIAN TRUONG



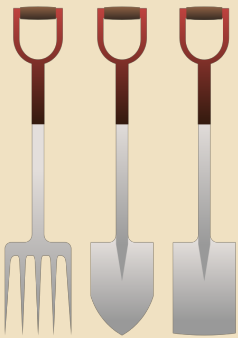
St Mary's School, Norwood Green: Dates for Spring Term 2023-2024

Monday 8 th January	Term Starts
Wednesday 10 th January	Swimming Elm class 10.00am
Thursday 11 th January	Parent Tour for new Nursery and September 2024 Reception intake at 9.30am
Friday 12 th January	Field Maple Class - Police talks
Wednesday 17 th January	Swimming Elm class 10.00am
Wednesday 24 th January	Swimming Elm class 10.00am
Thursday 25 th January	Hearing Tests – Ash class
Friday 26 th January	Elm Class Litter Picking – 1.00pm
Wednesday 31 st January	Swimming Elm class 10.00am
Friday 1 st February	R.E. Ambassadors to visit St Paul's for Annual Service
Friday 2 nd February	Young Voices-St Mary's Choir
Wednesday 7 th February	Swimming Elm class 10.00am
Thursday 8 th February	Parent Tour for new Nursery and September 2024 Reception intake at 9.30am
Thursday 8 th February	Elm Class Assembly 2.30pm – parents welcome
Friday 9 th February	Grey Willow Class Litter Picking – 1.30pm
Friday 9 th February	End of Term - finish at 3.00pm
Monday 12 th January	Half Term – 12 th -16 th February
Monday 19 th February	School begins
Monday 19 th February	Choir restarts for Year 2-6
Tuesday 20 th February	Forest School for Beech & Grey Willow Class
Tuesday 20 th February	Chestnut Class trip to the Synagogue
Tuesday 20 th February	Elm Class trip to Shree Ram Mandir
Wednesday 21 st February	Swimming Elm class 10.00am
Tuesday 27 th February	Forest School for Beech & Grey Willow Class
Wednesday 28 th February	Swimming Elm class 10.00am
Wednesday 28 th February	Secondhand World book day costume sale 3.00pm
Friday 29 th February	Parent Tour for new Nursery and September 2024 Reception intake at 9.30am

Western Road Urban Garden

COMMUNITY ACTION DAYS

Entrance is next to 217 Western Road, Southall, UB2 5HR



We are working with at Western Road to create an Urban Garden for residents and have three Community Action Days planned on :

Saturday 17th February (10 am -1pm)

Saturday 16th March (10 am -1 pm)

Saturday 13th April (10 am - 1 pm)

All are welcome !

For further information contact **Call** : 07958 499222 or **Email** : manager@southallcommunityalliance.com

This project is supported by :



**Ealing Parks
Foundation**



**Southall
Transition**



Ealing Mental Health Support Team

WORKSHOPS FOR PARENT/CARERS

SPRING TERM 2024



Over the spring term, Ealing Mental Health Support Team will be running a variety of workshops for parents and carers of children who attend a school in Ealing.

If you would like to sign up to one of our workshops, please do so on the below website or scan the QR code.



<https://forms.gle/jmUT9kJNRPNdBUAh6>



If you have any questions, please do email us on: Ealing.mhst@nhs.net

PRE AND POST-ATTENDANCE GUIDE

Step 1

Use our QR code to sign up for a workshop(s) of your choice

Step 2

You will be emailed a Microsoft Teams link several days before the workshop

Step 3

You'll receive another email reminder on the morning of the workshop

Step 4

All workshops start promptly on the time advertised. Please note we cannot guarantee access to the workshop if sign up is on the day so do sign up as early as possible

Step 5

To ensure you receive resources from the workshop you have attended, please complete the feedback form provided at the end of the session



measles

Don't let your child catch it

– get them vaccinated with the MMR vaccine

- measles outbreaks happen when not enough children have been vaccinated
- measles can be a very serious disease, leading to ear and chest infections, fits, diarrhoea, and damage to the brain. Measles can kill
- your child is at risk of measles if he or she hasn't had the MMR vaccination
- 2 doses of MMR vaccine are needed to get the best protection
- if your child is due to have had 2 doses of MMR but has not yet received them, no matter what age they are, you should contact your GP to get them vaccinated as soon as possible*
- if you can't remember if your child has had any, 1 or 2 doses of MMR vaccine, check his or her personal child health record (the Red Book). If this doesn't help, speak to your GP
- if you don't know how many doses your child has had, it's better to have 2 doses of MMR vaccine now rather than risk leaving them unprotected

*In response to a local outbreak then the 2 doses can be given one month apart from the age of 18 months.



MONDAY AFTER SCHOOL YEAR 1-4 MULTISPORTS



ST MARY'S C of E PRIMARY SCHOOL



SCAN TO BOOK
www.thepsdgroup.org.uk/psd-clubs



RAISING THE STANDARDS IN
PHYSICAL EDUCATION AND SPORT



info@thepsdgroup.org.uk



0203 397 7409

FRIDAY AFTER SCHOOL YEAR 3 – 6 FOOTBALL



ST MARY'S C of E PRIMARY SCHOOL



SCAN TO BOOK
www.thepsdgroup.org.uk/psd-clubs



RAISING THE STANDARDS IN
PHYSICAL EDUCATION AND SPORT



info@thepsdgroup.org.uk

0203 397 7409

**PRIMARY SPORTING DEVELOPMENT LTD**

119 Southway . Guildford
Surrey . GU2 8DH

0203 397 7409

info@thepsdgroup.org.uk
www.thepsdgroup.org.uk

Dear Parent/Carer

St Mary's Church of England Primary School extra-curricular clubs,

The following extra-curricular clubs will begin week commencing 8th January through to week commencing 25th March 2024:- (excluding half term 12th - 16th February 2024)

Monday	Years 1, 2, 3 & 4	Multi- sports	8 th January 25 th March 2024 (11wks)	3:15pm-4:15pm	£55.00
Friday	Years 3-6	Football	12 th January - 22 nd March 2024 (10wks)	3:15pm-4:15pm	£50.00

All clubs will now be available to book online through our PSD website on a first come first serve basis.

There will be a maximum of 20 spaces available for each club (minimum 12 for club to take place). Please visit www.thepsdgroup.org.uk to book your child's place.

Clubs are open to boys and girls of all abilities the coaching programme introduces young players to the fundamentals of sport. Coaching sessions aim to improve ability, build confidence, and emphasize the importance of sportsmanship whilst maintaining a realistic perspective of competition.

All sessions delivered by qualified PSD staff, first aid trained, child-protection educated and hold relevant DBS checks.

Player of the week certificates will be presented at the end of the session.

Please note: Every effort will be made to ensure the club runs outside on the playground. If however, the weather prevents the session going ahead, a classroom theory based session will take place. Please ensure your child wears suitable clothing to keep them warm in the colder months.

Kind regards

The PSD Group



ISLEWORTH FOOTBALL COACHING COURSE

AT ISLEWORTH & SYON SCHOOL

RIDGEWAY ROAD, ISLEWORTH, TW7 5LJ

WHEN: EVERY MONDAY

STARTING: MONDAY 8TH JANUARY 2024

(PLEASE NOTE CHILDREN CAN JOIN COURSE AFTER START DATE CONTACT NUMBER FOR MORE INFO)

MONDAYS:

- Group 1 : School Years Reception & Year 16.00pm-7.00pm (Pitch 1)
- Group 2 : School Year 2 & Year 3.....6.00pm-7.00pm (Pitch 2)
- Group 3 : School Year 4 & Year 5.....7.00pm-8.00pm (Pitch 1)
- Group 4 : School Year 6 & Year 7.....7.00pm-8.00pm (Pitch 2)

Dear Parents,

I am pleased to inform you that, due to the huge success of our football courses over the last 24 years, we are following up the football coaching programme for the season starting in September 2023. The course will run for 12-14 weeks and the programme is for boys and girls aged between 4 and 12.

About our Course

- The unique practice techniques are specifically designed to work with children of all abilities, ranging from the absolute beginner to the more advanced player.
- The course is run by F.A. qualified coaches, who are DBS checked, and hold an advanced premier skills qualification, they are currently working with children, enabling them to learn **ESSENTIAL FOOTBALL TECHNIQUES**, building **CONFIDENCE**, improving **FITNESS** and providing the most important ingredient **FUN!**
- Children will be supervised at all times, although parents are welcome to stay and watch.
- Each child will be provided with a football for individual practice.
- It is an **INDOOR** course held in Sports Halls, therefore trainers must be worn.
- On the final week of the course we hold a presentation, whereby **EACH CHILD WILL RECEIVE AN ENGRAVED TROPHY.**
- **Ex Premier League Birmingham City, West Bromwich Albion and Fulham player Geoff Horsfield** quotes, "I've coached on these courses with the team and they are fantastic in the way they deliver their coaching sessions!"
- **Ex England World Cup star and Sky Sports pundit Paul Merson** quotes, "I have presented trophies to the children on these courses and it's great to see the smiles on their faces and sense of achievement!"
- Children also have a chance to win many other special individual awards and trophies for various skills, including 'American shoot out' and 'Penalty shoot out' competitions.
- Parents and friends are most welcome to attend the presentation.
- The cost of the course is £8.50 per week; payment is made every 4 weeks with the first payment of £34 due on week 1. **Please Note:** Places are limited, therefore bookings will be taken on a first come, first served basis.

www.unswestcoaching.org

TO RESERVE PLACES PLEASE TEXT:

ISLEWORTH + CHILD'S NAME + AGE + GROUP NO. (1, 2, 3 or 4)

and receive confirmation by text to: **07880 798 762**

CHRISTMAS FUN FOOTBALL CAMP

We are also holding our very popular 4 day **CHRISTMAS** football camp at Swakeleys School (Hillingdon, UB10 0EJ) on **TUESDAY 2ND to FRIDAY 5TH JANUARY 2024** (9.00am – 3.00pm) for boys and girls aged 4 – 13. Each child will receive an engraved trophy. The cost of the 4 day camp are £80 per child. (£50 for additional siblings & Individual Days £25 per day) If you would like your child to attend these football fun days please text: **SWAKELEYS CHRISTMAS CAMP + CHILD'S FULL NAME + AGE TO: 07880 798 762** to obtain confirmation and further details.